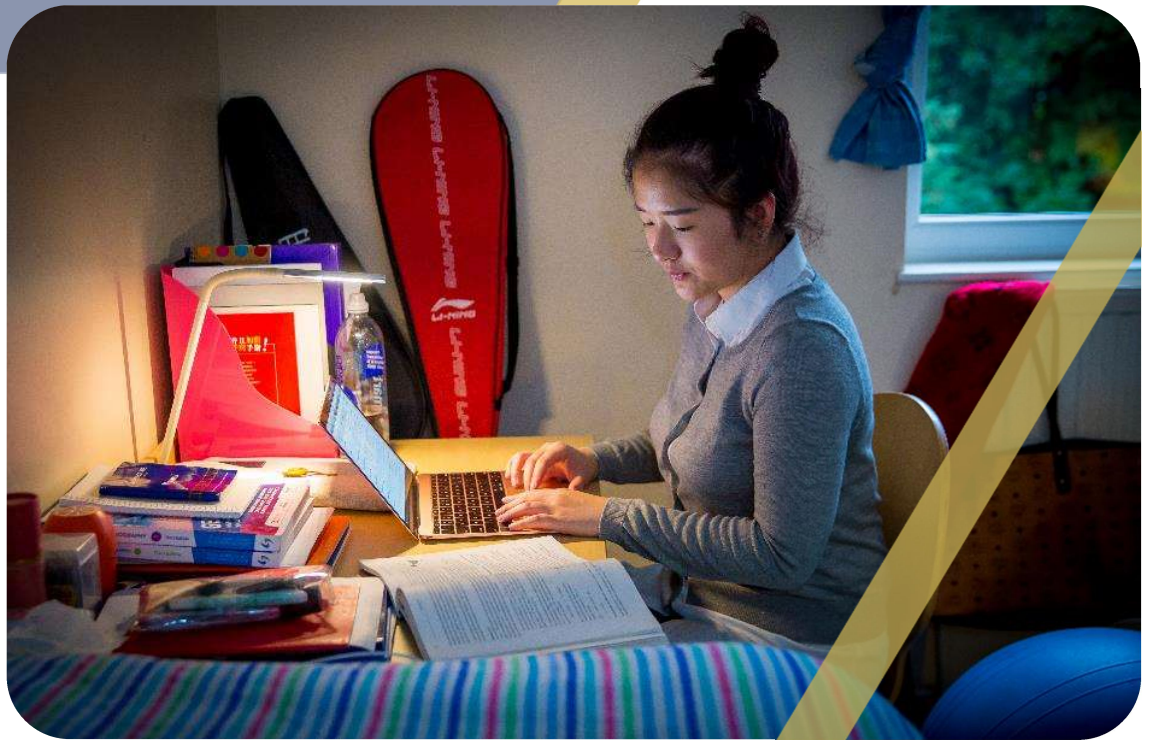




BEDSTONE

www.bedstone.org

EAL PROGRAMME GUIDE 2020-2021



Welcome to Bedstone College's EAL Programme

Bedstone College offers tailored English as an Additional Language (EAL) support, with different courses available depending on the English language ability of each student joining us.

EAL support is specifically designed to help international students make a successful entry into the mainstream education system in the UK, leading to an even more successful academic career.

Some international students will already have the required standard of English, and therefore may only need 'Appropriate Support Lessons, (ASL), which are timetabled around their other academic lessons.

Others joining us may need more comprehensive support (please see our all-inclusive fee structure). Bedstone will prepare the students academically, linguistically and socially from the day that they arrive.

About Bedstone

Founded in 1948, Bedstone College is situated in the beautiful English countryside on the Herefordshire, Shropshire, Powys borders. It is now a leading independent day and boarding school for boys and girls aged four to 18.

Bedstone is consistently amongst the top Independent Schools in its region. The well-qualified and highly-motivated staff, a hard-working student body and a friendly, family atmosphere make Bedstone College a happy, dynamic and successful school.

Bedstone is a traditional British independent school, with around 200 students, 75 of whom are boarders. This allows the school to benefit from an extremely tight knit and family-like community.





Available Courses

1. **Appropriate Support Lessons (ASL)**

Recommended for students who come to us with at least three years' previous English language study. Students on this programme will prepare for a suitable Cambridge (PET, FCE, etc.) and City & Guilds exams

2. **English as an Additional Language Support (EAL)**

Recommended for students in need of more structured support. The EAL lessons will be timetabled and allocated according to need. This will usually be between three and six lessons each week of:

- i) General English lessons and/or Preliminary English Test prep at KS3
- ii) iGCSE English as a second language course which will lead to an iGCSE qualification at the end of year 11

3. **General English classes or IELTS classes** for year 11 and sixth formers depending on their level of English.

4. **Additional British Culture/Conversation lessons**

Enrichment lessons driven by students' interest and knowledge of Great Britain. Topics discussed include fashion, music, British customs, food and sport.

5. **Three year A level course, designed for A level students with very basic English**

This course immerses the student in their chosen subjects for three years rather than two, to help them gain better English language skills. In the first year, the focus is predominantly on the acquisition of language proficiency, in order to be able to fully access the A level course in the second year.

6. **Pre-Sessional Programme**

Minimum one term, for students who need to improve their English or academic ability before beginning their main course of study.

7. **University Foundation Programme**

One year programme for students looking for a fast-track route to a wide range of British University Degree courses, who have completed their secondary education but have not yet met the entry requirements for their chosen course or university.

International ‘all inclusive’ fee structure (January 2021)

All-inclusive Fee: £11,415 per term, which includes:

Tuition:

- All tuition in mainstream classes (including sports and most activities)
- Up to six lessons in English as an Additional Language (EAL)
- CAS/VISA support
- Shared transfers to and from airports on key term dates

Boarding:

- Full board and lodging
- Three meals plus afternoon tea each day
- Linen/duvets for beds
- Weekly laundry service
- Unlimited weekend activities programme (does not include extra ‘top-ups’)

Excluded: Guardianship arrangements + some activities (e.g. one-to-one music tuition)

For an application form please contact the Admissions Department at Bedstone College: admissions@bedstone.org or +44 (0)1547 530961

